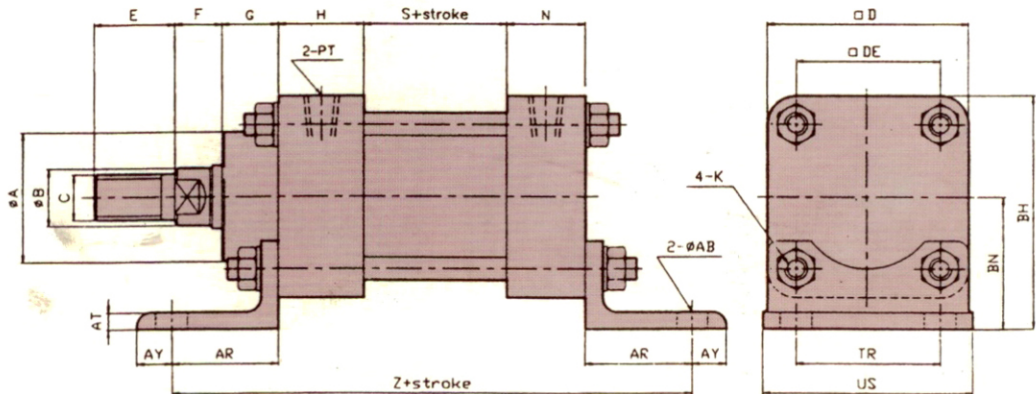
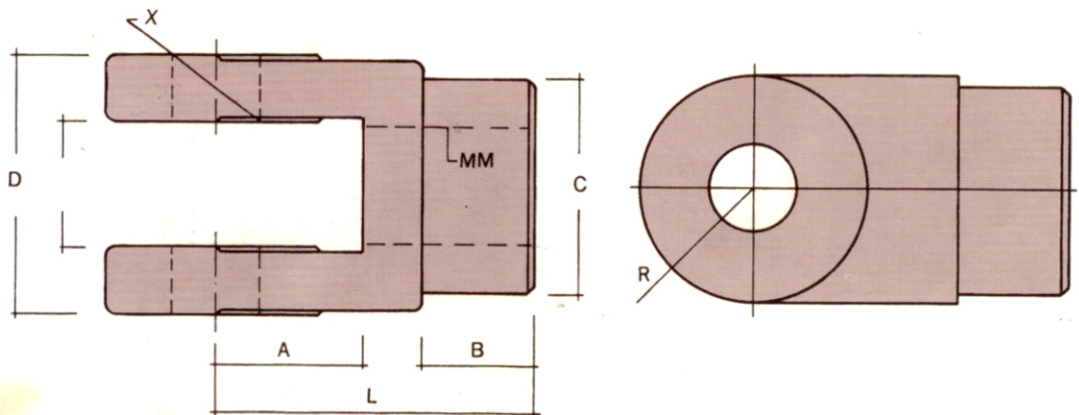


油壓缸油壓 LB 型



SIZE BORE	φ A	φ B	C	□ D	□ DE	E	F	G	H	N	K	φ AB	AR	AY	AT	BN	BH	TR	US	S	Z	PT
φ 30	30	16	M14XP1.5	50	34	28	10	15	25	25	M8XP1.25	9	28	10	5	35	60	34	53	50	156	1/4
φ 40	40	20	M16XP1.5	64	45	28	17	20	30	30	M8XP1.25	9	38	12	6	45	77	45	68	50	186	3/8
φ 50	45	20	M16XP1.5	70	50	28	17	20	30	28	M10XP1.25	11	38	12	6	46	81	50	73	50	184	3/8
φ 63	55	25	M22XP1.5	85	60	40	20	30	31	31	M10XP1.25	11	38	12	6	53	96	60	88	50	188	3/8
φ 80	62	30	M26XP1.5	106	74	40	20	32	37	35	M12XP1.5	13	36	14	6	60	113	74	105	55	199	1/2
φ 100	78	35	M30XP1.5	122	89	45	20	32	37	37	M14XP1.5	16	48	27	9	78	139	89	127	80	250	1/2
φ 125	85	50	M40XP2.0	147	110	55	25	31	40	40	M16XP1.5	18	51	24	9	87	161	110	150	80	262	1/2

油壓缸配件



規格	Y 接頭 尺寸							
M M	A	B	C	D	L	T	R	X
M14P1.5	20	22	28	44	56	16	15	12
M16P1.5	20	21	28	44	56	16	15	12
M18P1.5	20	21	28	44	56	16	15	12
M22P1.5	32	26	41	52	69	24	22	20
M26P1.5	32	24	50	58	70	28	26	20

規格	Y 接頭 尺寸							
M M	A	B	C	D	L	T	R	X
M30P1.5	38	17	41	72	80	32	29	20
M30P1.5	39	20	46	84	80	40	27	25
M40P2.0	40	47	69	69	83	30	40	35
M50P2.0	50	50	80	80	100	35	40	35